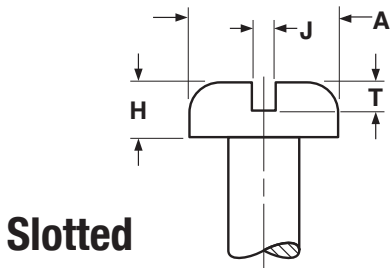
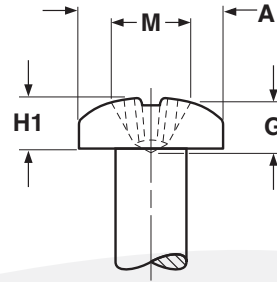


HEAD DIMENSIONS

Pan
Combo Pan

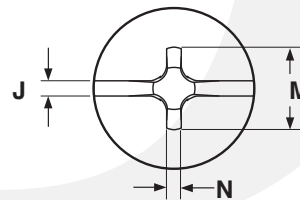
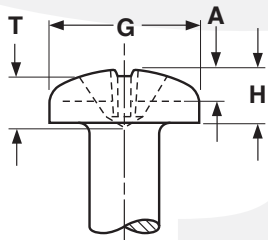


Slotted



Phillips

PAN HEADS FOR MACHINE SCREWS AND SEMS														ASME B18.6.3-2010
Nominal Size	A		H		H1		J		T		M	G		Phillips Driver Size
	Head Diameter		Height of Head				Width of Slot		Depth of Slot		Dimensions of Recess			
			Slotted		Recessed						Diameter	Recess Penetration Gaging Depth		
	Max	Min	Max	Min	Max	Min	Max	Min	Max	Min	Ref	Max	Min	
0	.116	.104	.039	.031	.044	.036	.023	.016	.022	.014	.060	.032	.014	0
2	.167	.155	.053	.045	.062	.053	.031	.023	.031	.022	.097	.052	.034	1
3	.193	.180	.060	.051	.071	.062	.035	.027	.036	.026	.105	.061	.043	1
4	.219	.205	.068	.058	.080	.070	.039	.031	.040	.030	.115	.071	.053	1
5	.245	.231	.075	.065	.089	.079	.043	.035	.045	.034	.152	.072	.046	2
6	.270	.256	.082	.072	.097	.087	.048	.039	.050	.037	.159	.080	.055	2
8	.322	.306	.096	.085	.115	.105	.054	.045	.058	.045	.175	.097	.071	2
10	.373	.357	.110	.099	.133	.122	.060	.050	.068	.053	.192	.113	.089	2
12	.425	.407	.125	.112	.151	.139	.067	.056	.077	.061	.252	.124	.098	3
1/4	.492	.473	.144	.130	.175	.162	.075	.064	.087	.070	.274	.144	.118	3
5/16	.615	.594	.178	.162	.218	.203	.084	.072	.106	.085	.343	.173	.149	4
3/8	.740	.716	.212	.195	.261	.244	.094	.081	.124	.100	.382	.213	.190	4
1/2	.987	.958	.281	.260	.348	.325	.106	.091	.161	.131	.428	.260	.235	4



COMBINATION DRIVE PAN HEADS FOR MACHINE SCREWS																ASME B18.6.3-2010	
Nominal Screw Size	G		H		J		A		M		T		N		Recess Penetration		Driver Size
	Head Dimensions				Slot Dimensions				Recess Dimensions								
	Head Diameter		Head Height		Width		Depth		Diameter		Depth		Recess Width				
	Max	Min	Max	Min	Max	Min	Max	Min	Max	Min	Max	Min	Min	Max	Min		
4	.219	.205	.080	.070	.039	.031	.040	.027	.122	.109	.078	.060	.019	.071	.053	1	
6	.270	.256	.097	.087	.048	.039	.050	.033	.166	.153	.091	.066	.028	.080	.055	2	
8	.322	.306	.115	.105	.054	.045	.058	.041	.182	.169	.108	.082	.030	.097	.071	2	
10	.373	.357	.133	.122	.060	.050	.068	.048	.199	.186	.124	.100	.031	.113	.089	2	
12	.425	.407	.151	.112	.067	.056	.077	.055	.259	.246	.141	.115	.034	.124	.098	3	
1/4	.492	.473	.175	.162	.075	.064	.087	.063	.281	.268	.161	.135	.036	.144	.118	3	
5/16	.615	.594	.218	.203	.084	.072	.106	.076	.350	.337	.193	.169	.059	.173	.149	4	